



Materials, Methods and Data Analysis of Diabetes Registers

The Diabetes Register of AMNCH Dublin, Ireland

Tony Moulton

*The Adelaide & Meath Hospital, Dublin
Incorporating the National Children's Hospital*

Special BIRO Academy Meeting

“Coordinated Information Delivery from Diabetes Registers
to improve quality and outcomes in Europe”

Rome 4-5th June 2010

<AMNCH Diabetes Centre, Ireland>

Reference Population



Country: Ireland
Region: Tallaght (Dublin South West)
Estimated Population: 123,500
Diabetes Prevalence: 5%*
Type I 0.4%
Type II 4.6%

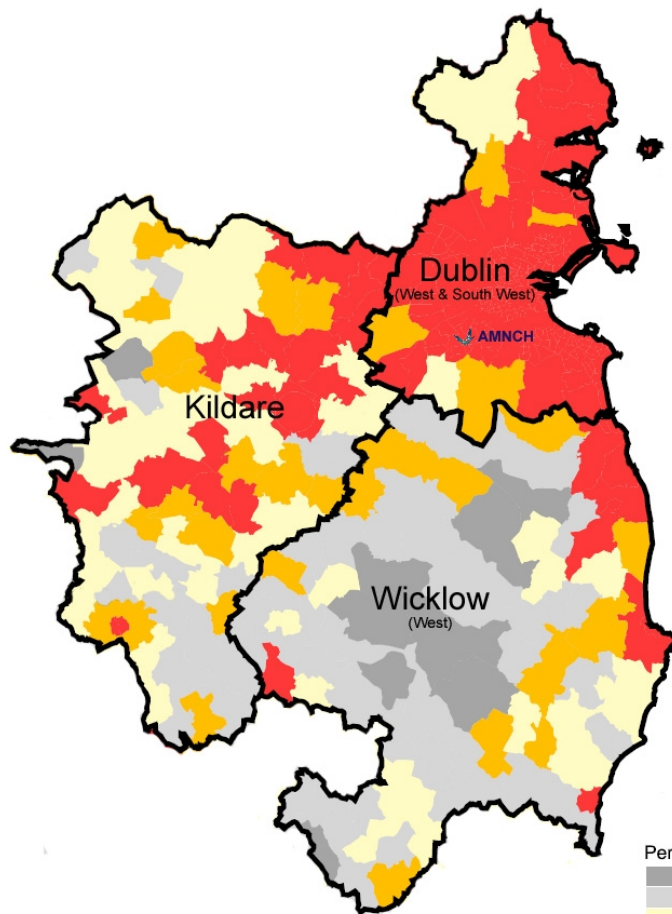
Type of Data Source: Diabetes Clinic

Participating Centre: AMNCH

* Making Diabetes Count – What does the future hold? – INIsPHO / IPH 2007

<AMNCH Diabetes Centre, Ireland>

Reference Diabetes Data



Year: 2008

Region: Tallaght (Dublin South West)

Total N. Subjects: ~4000 (incl. paediatrics)

Total N. Episodes: 8650 clinical / 32450 lab

T1: 19%

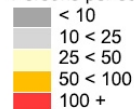
T2: 80%

Other: 1%

6500 active patients in register

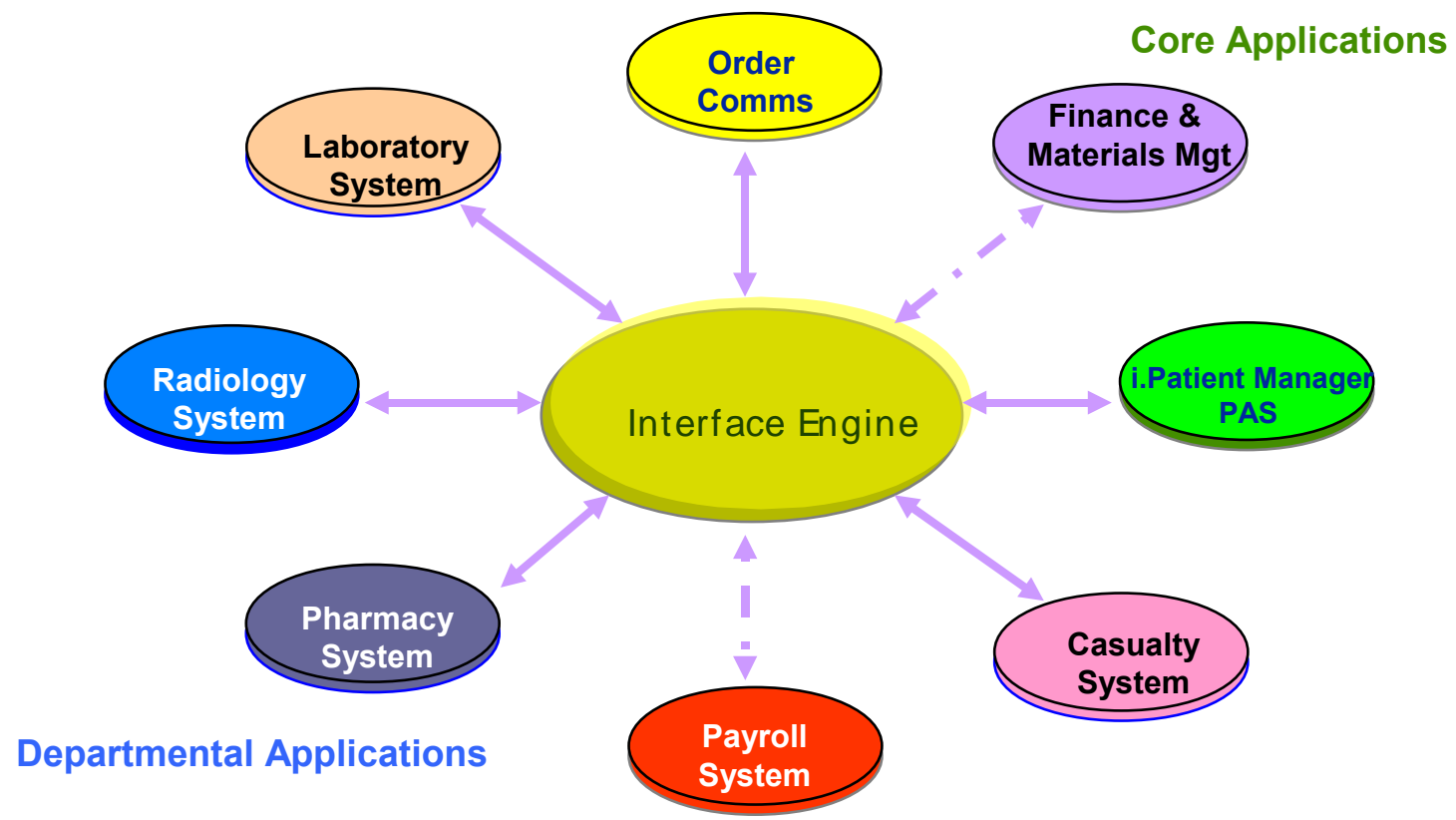
~700 new patients every year

Persons per square kilometre



< AMNCH Diabetes Centre, Ireland >

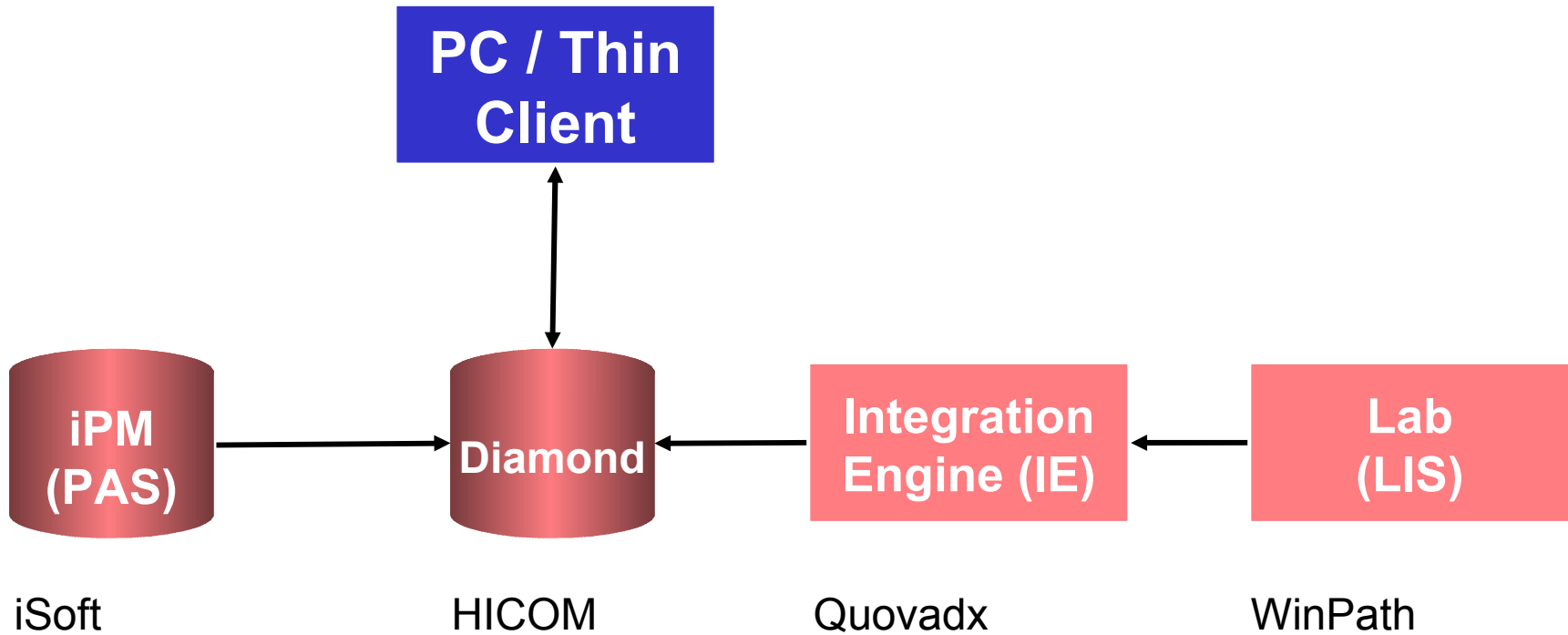
Local Systems Structure: IT



< AMNCH Diabetes Centre, Ireland > Diamond Diabetes Database



Windows XP / Server 2003

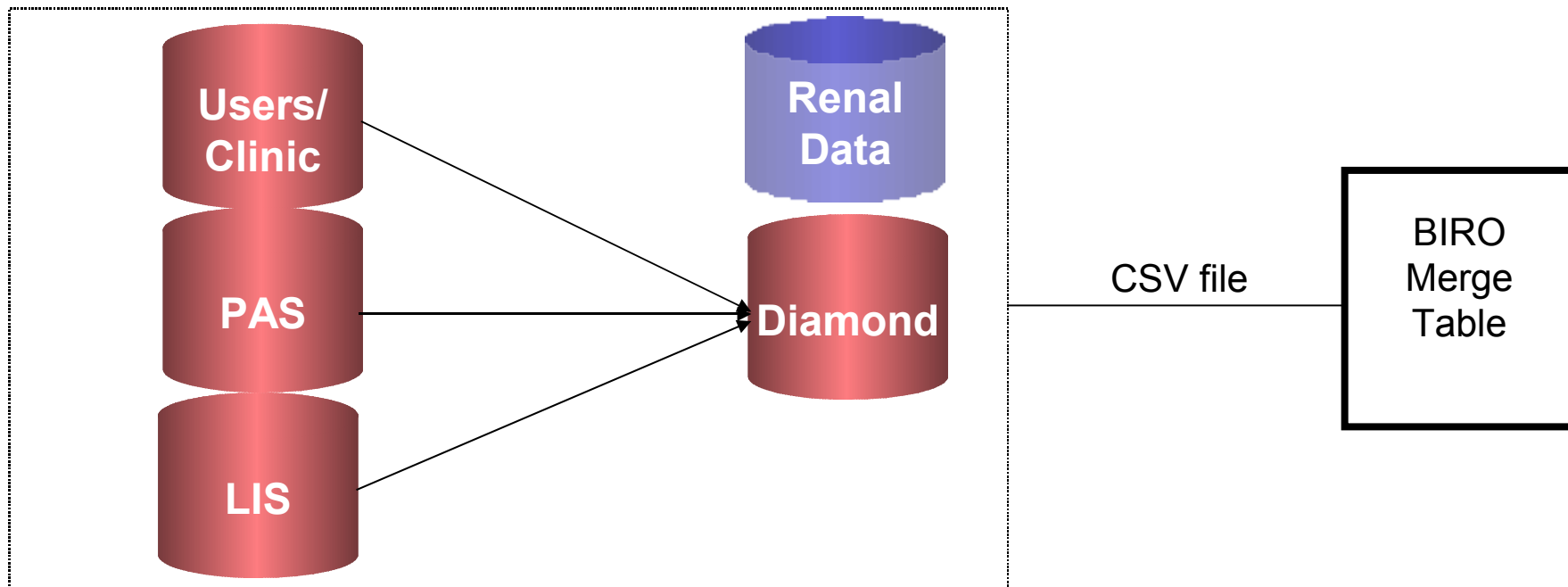


< AMNCH Diabetes Centre, Ireland > Data Manipulation



< AMNCH Diabetes Centre, Ireland >

Local Database Structure and the BIRO Merge Table



< AMNCH Diabetes Centre, Ireland >

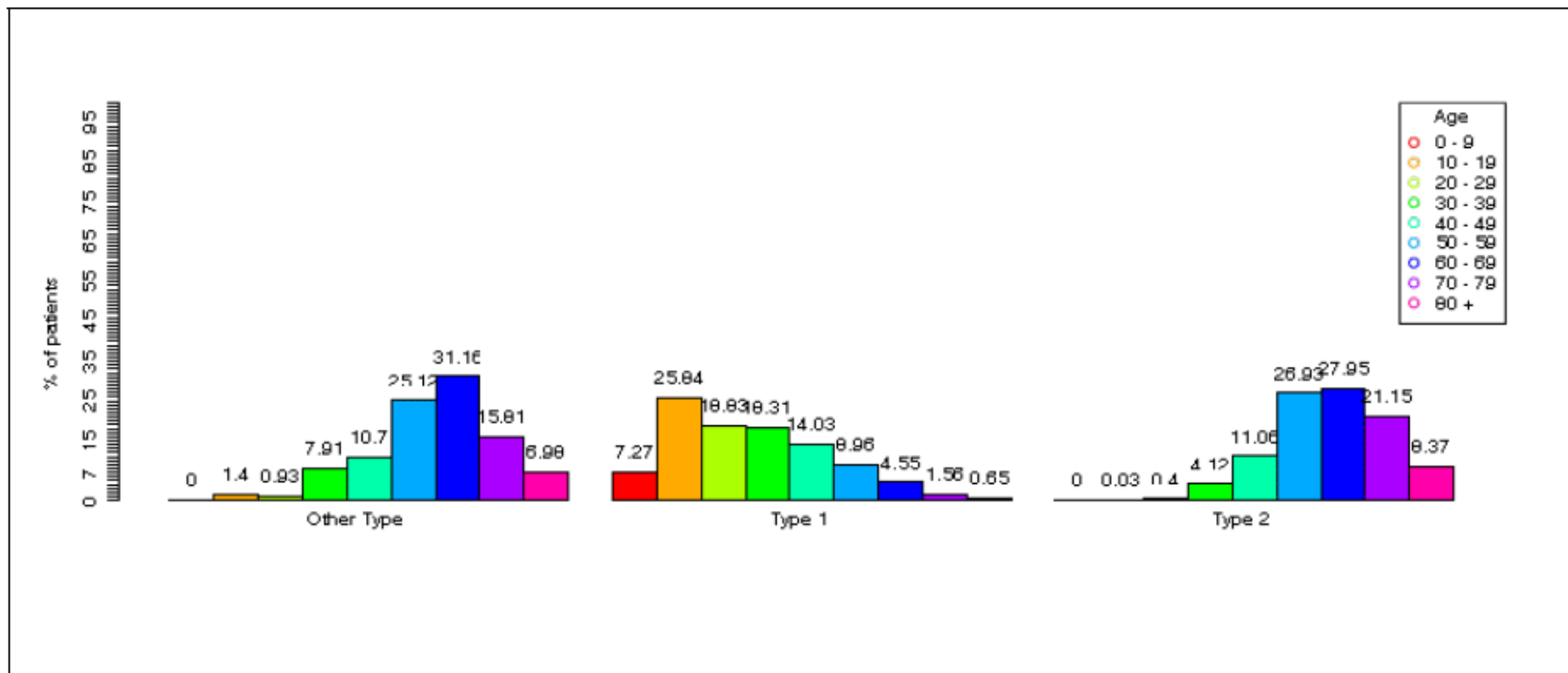
Merge Table Contents



Patient ID		End Stage Renal Therapy
Data Source ID		Renal Dialysis
Type Of Diabetes		Renal Transplant
Sex	Total Cholesterol	Stroke
Date of Birth	HDL	Active Foot Ulcer
Date of Diagnosis	Triglycerides	Myocardial Infarction
Episode Date	Eye Examination	Laser
Smoking Status	Retinopathy Status	Hypertension
Cigarettes per day	Maculopathy Status	Blindness
Alcohol Intake	Foot Examination	Amputation
Weight	Foot Pulses	Antihypertensive Medication
Height	Foot Sensation	Hypoglycemic Drug Therapy
Body Mass Index	Nasal Therapy	Oral Drug Therapy
Systolic Blood Pressure	Average Injections	Pump Therapy
Diastolic Blood Pressure	Self Monitoring	
HbA1c	Diabetes Specific Education	
Creatinine	Lipid Lowering Therapy	
Microalbumin	Anti-platelet Therapy	
	Patient Enrolment in DMP	

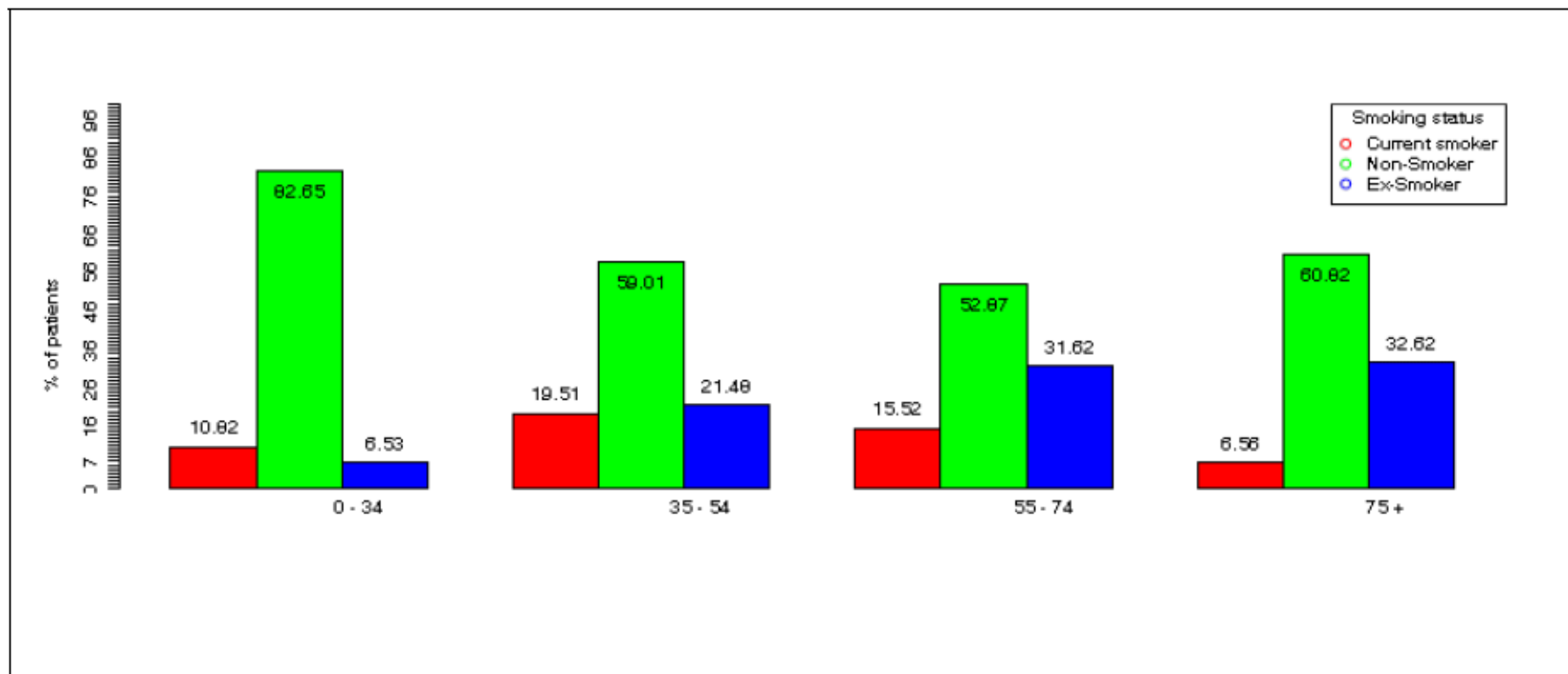
< AMNCH Diabetes Centre, Ireland >

Sample Report: Age (by type of Diabetes)



Barplot: Age (by Type of Diabetes)

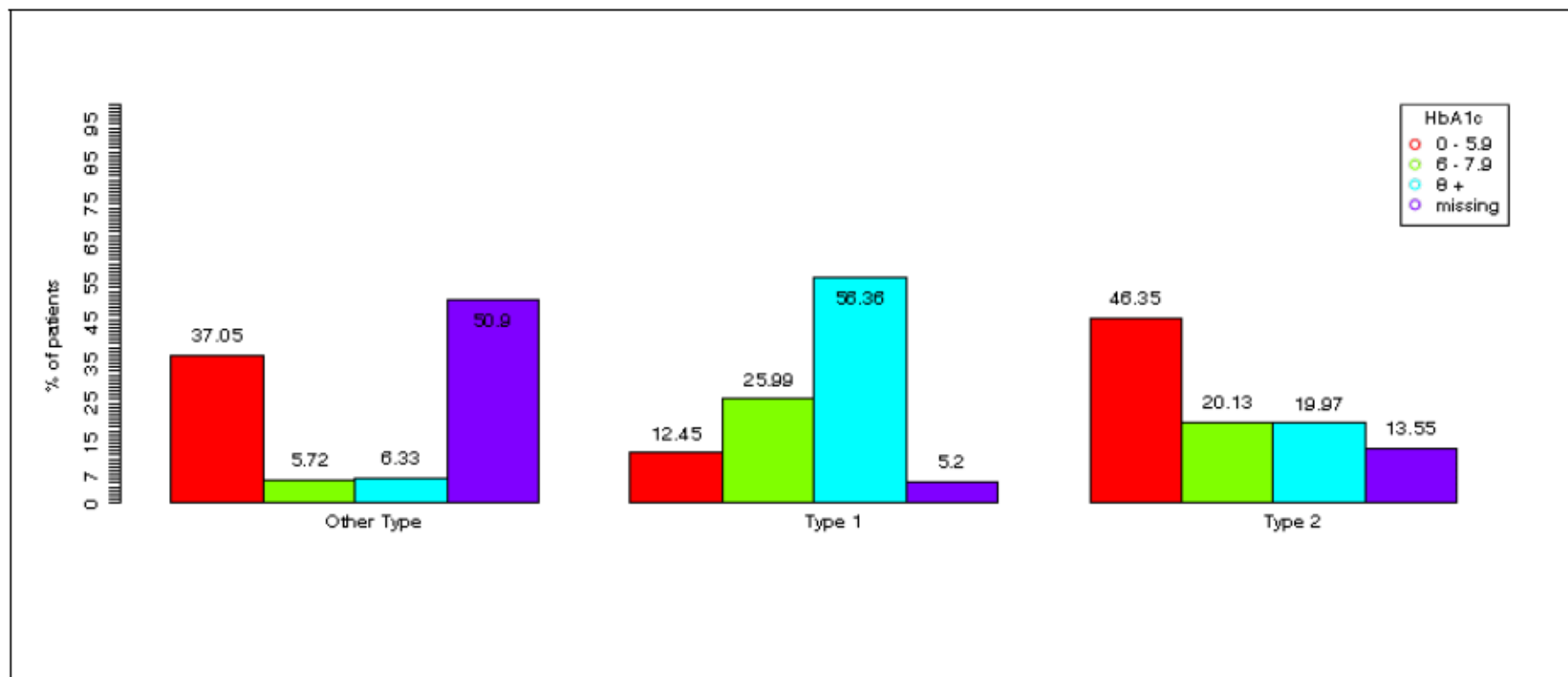
< AMNCH Diabetes Centre, Ireland > Sample Report: Smoking Status (by Age)



Barplot: Smoking status (by Age)

< AMNCH Diabetes Centre, Ireland >

Sample Report: HbA1c (by Type of Diabetes)



Barplot: HbA1c (by Type of Diabetes)

< AMNCH Diabetes Centre, Ireland >

Sample Results: Lipids (measured in last 12 months)



Lipids	Other Type				
	0 - 34 (%)	35 - 54 (%)	55 - 74 (%)	75 + (%)	
Yes	8 (50)	51 (67.11)	133 (70.37)	32 (62.75)	224
No	8 (50)	25 (32.89)	56 (29.63)	19 (37.25)	108
	16 (4.82)	76 (22.89)	189 (56.93)	51 (15.36)	332

Lipids	Type 1				
	0 - 34 (%)	35 - 54 (%)	55 - 74 (%)	75 + (%)	
Yes	229 (52.4)	143 (72.59)	69 (82.14)	7 (53.85)	448
No	208 (47.6)	54 (27.41)	15 (17.86)	6 (46.15)	283
	437 (59.78)	197 (26.95)	84 (11.49)	13 (1.78)	731

Lipids	Type 2				
	0 - 34 (%)	35 - 54 (%)	55 - 74 (%)	75 + (%)	
Yes	24 (57.14)	566 (77.43)	1466 (80.51)	390 (67.36)	2446
No	18 (42.86)	165 (22.57)	355 (19.49)	189 (32.64)	727
	42 (1.32)	731 (23.04)	1821 (57.39)	579 (18.25)	3173

Lipids (by Age, Type of Diabetes)

< AMNCH Diabetes Centre, Ireland >

Using BIRO



- Problems/Weaknesses
 - Translating local values into something usable
 - Local data quality ('missing')
- Strengths
 - Setup / Installation
 - Ease of use
 - Support

< AMNCH Diabetes Centre, Ireland >

Future LOCAL Perspectives

- Review of patient problem lists
 - e.g. Stroke, MI, Hypertension
 - Rationalisation of problem list
 - ICD 10 Coded for audit purposes
- Setting up of DSIG (Diabetes Service Implementation Group)
 - Increased cooperation with GP services for Type2 patient care
 - New care model, data collection issues

< AMNCH Diabetes Centre, Ireland >

Future BIRO Perspectives



- Investigate the possibility of importing 2 or more data files/sources into one database
 - data combined into single report
 - e.g. clinical and lab data



< AMNCH Diabetes Centre, Ireland >



Thank you for your attention!

