

OECD PaRIS

Patient-reported Indicators Survey

Progress and Next Steps

EU-Bridge Health Meeting
22 September 2017
Jillian.Oderkirk@oecd.org



OECD Policy Forum and Ministerial, January 2017

Strategic direction --- People-centred health services

- ✉ modernise delivery
- ✉ build knowledge & capacity
- systematise patient-reported measurement



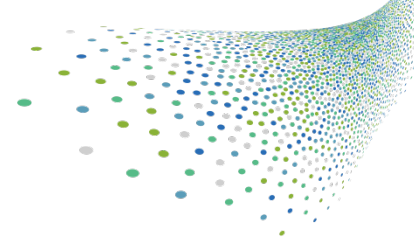
Ministers

- Recommended the development of internationally comparable PROMs and PREMS
- Called on the OECD to lead this effort

www.oecd.org/health/ministerial/



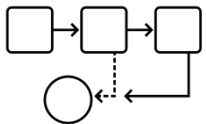
What is the state of play?



PROMs covering elective surgery, cancer care, mental health – specific diseases/conditions



Diverse **instruments** and collection **methods** (paper, electronic, telephone...) in use



System-wide implementation is **rare**

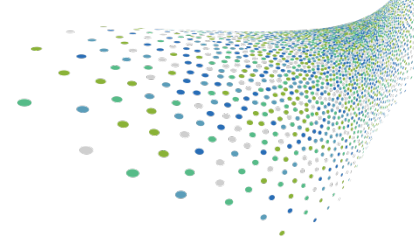


Impetus predominantly **ground-up** (clinician-led) - principal uses at **clinical level**

Lack of PROMs for the fastest growing area of health care need (and spending): primary care for complex, chronic diseases and disability.



PaRIS 2-pronged approach



Addressing critical gaps in the measurement of patient-reported indicators



New survey of patients of primary health care physicians

**Multiple long-term conditions/
complex patients**

Patient-reported outcomes & experiences

With international partners & providers & patients

Accelerate and standardise work already underway

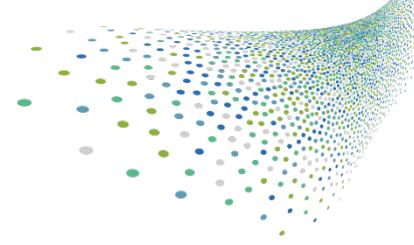
**Cáncer, hip and knee OA,
(then AMI, stroke, mental health,...)**



Supporting national health systems to collect patient-reported indicators in a comparable way



Condition-specific indicators



Breast Cancer and **hip and knee OA** recommended by Health Care Quality Indicators (HCQI) Expert Group at their meeting May 2017

Establish two small, time-limited panels of country experts to consider the most appropriate PROMs and PREMs in more detail including

- Data availability and clinical and systems use of data
- Potential for mapping among question sets in use
- Feasibility of piloting international benchmarking

Potentially begin data collection in pilot countries in 2018-19

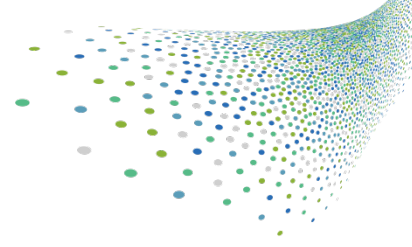
Collaboration with **ICHOM**

- Strong clinical representation in 'standard sets' development
- Robust methodology, validation and risk adjustment

Health professional input within the panels of experts



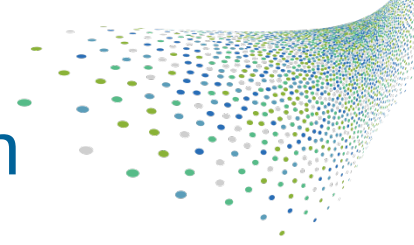
New Survey - Indicators for complex patients/multiple long-term conditions



- First international survey of health care outcomes and experiences of patients with multiple long-term conditions/complex patients
- Focus on Patients in Primary Health Care:
 - Coverage of patients with multiple long-term conditions in a range of health states
 - Relate characteristics of primary health care services to the outcomes and experiences of patients
 - New insights regarding the orientation of PHC services for optimal health.



Task Force to develop the survey plan



1) Propose a **survey design** including:

- Sampling strategy
- Survey content themes and questions
- Data collection strategy

2) Develop a **multi-year plan** of key activities including:

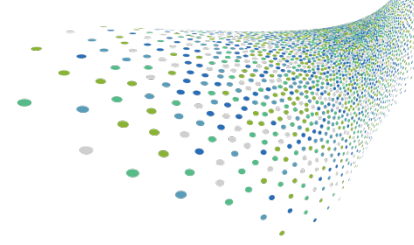
- Translation
- Content testing
- Sampling frames and selection
- Questionnaire design/CAI
- Field operations
- Data processing and weighting

3) Describe the **anticipated costs**:

- Costs associated with contracted services
- National survey implementation costs



Task Force Milestones



December 2017

- Interim Report submitted to the HC
 - Initial recommendations re: survey content and design

May 2018

- Full proposal for the implementation of the survey submitted to the Health Committee
- Describes the steps and timeline for pilots and the full survey